



Bata Industrials®

IMPROVING WORKING LIVES

THE ENERGY FOOTWEAR

AUSTRALIAN CATALOGUE

Bata Industrials premium safety footwear range







Bata Industrials®

MANUFACTURING IN AUSTRALIA SINCE 1961

BATA'S REACH IS WORLDWIDE; ITS PRESENCE IS LOCAL.

The company that evolved into the Bata Shoe organization was first registered in the town of Zlin Czechoslovakia in 1894. From humble beginnings the small family business expanded rapidly under the vision and guidance of founder Thomas Bata. Thomas was a ninth generation shoemaker determined to become a manufacturer who could provide customers with value for their money.

Bata became an international business in the first half of the 20th century and by the second half of the century had established a true global footprint (production in Australia commenced in 1961). A progressive and market leading pioneer of the modern footwear industry Bata is now an iconic brand, recognized around the world and serving one million customers in over 60 countries every day.

BATA INDUSTRIALS IN AUSTRALIA

Bata Shoe Company of Australia Pty Ltd was established in Australia in 1961. Production commenced in Mornington Australia in 1981, and this remains our Head Office location today. The Australian company is registered as a quality endorsed company complying with ISO 9001 and AS/NZS 2210.3 and is proud to be part of the world wide organization. With a strong industrial focus, the company manufactures and wholesales over a million pairs of footwear each year through its industrial and wholesale retail business streams.

A working relationship between the Bata Australian and European industrial companies was the platform for the development of an association between the specialized industrial companies within the organization. In 2004 the first meeting of the Bata Industrials World Wide Group was held at Bata Best in the Netherlands. Involving companies from South America, South Africa, Europe, Australia and New Zealand, the enormous potential for the group to synergize information, product development, manufacturing, and sourcing became apparent. The combined technical and R&D resources of the group have lead to a cross pollination of ideas and the capacity for product development has never been stronger. This is epitomized by the development and re-structuring of the Bata Industrials ranges in Australia between 2005 and 2007.

Gary Horton - Operations Manager
Bata Industrials - Mornington Australia



Bata Industrials®

Today, Bata Industrials is one of the world's largest manufacturers of this type of footwear, and the only one that is truly a global player. With offices in the Netherlands, Chile, Mexico, South Africa, Kenya, India, China, Singapore, Australia and New Zealand, Bata Industrials serves customer markets on virtually every continent.

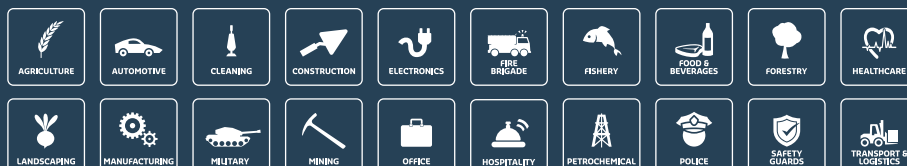
HOW CAN WE HELP YOUR BUSINESS?
DIRECT DISTRIBUTION ANYWHERE.

GLOBALLY WE SUPPLY THE FOLLOWING INDUSTRIES

BATA'S REACH IS WORLDWIDE; ITS PRESENCE IS LOCAL.

Bata Industrials was founded in the 1970's in response to a specific demand from the market for footwear for professionals. Since then, Bata Industrials has evolved to become a designer, producer and marketer of safety footwear and socks, exclusively targeting the professional end user markets.

Bata's reach is worldwide; its presence is local. Our novel international manufacturing structure allows Bata facilities around the globe to respond to the unique needs and wants of local customers. As a result, Bata is honoured to be a local company in every country it serves. Bata continues to be guided by the same core principle it has followed for over one hundred years: to know its customers and to create the best possible products to meet their needs.







Bata Industrials®

TESTIMONIALS

VIVA ENERGY AUSTRALIA

Formerly The Shell Company of Australia Limited

Ian Bell - HSSE Lead - Clyde Project

"Your product meets our requirements and we have specified it in the PPE options as the only boots that we will supply".

CENTRAL PETROLEUM LIMITED

Alan - HSSE Coordinator

"We were so impressed by the comfort, coolness and ease of putting on and off, not to mention not having to remove the boots going through the airport that he decided to keep them on and return home in them – declaring them the best he had worn".

CONTENTS

> Australian story	3
> Global story	5
> Testimonials	7
> Australian made	9
> PVC gumboots	11 - 15
> Industrials outsole guide	16 - 17
> Industry and features guide	18 - 19
> Fitting guide	20 - 21
> Sportmates	22 - 23
> Naturals	24 - 27
> Deep Comfort	28 - 29
> Bickz	30 - 33
> Bickz Sneakers	34 - 35
> Heroes	36 - 37
> Professionals collection	38 - 41
> Specialist	42





Bata Industrials®



AUSTRALIAN MADE PVC GUMBOOTS

EMPLOYING AUSTRALIAN WORKERS

Based on Victoria's Mornington Peninsula

Bata Australia produces Australian made boots, employing local staff, keeping jobs in Australia.

Gary Horton Operations Manager

We have been manufacturing in Mornington for over 33 years and have a dedicated and diligent team of employees in the manufacturing department. The average years of service within our manufacturing operation is over 20 years. This in turn reflects to quality product that is produced with such an experienced work force. We are all proud to be manufacturing an Australian made product in these times of Globalisation.

Chris Marion Key Account Manager

I have now been at Bata Australia for 26 years in many various roles. I began in the factory as a machine operator making gumboots in 1988, working on leather shoe making lines, Sales Representative roles and am currently the Key Account Manager for national and international customers. I've enjoyed being constantly challenged by doing many different jobs along the way and also with the support of Bata completed various training courses. The company is a great team of people with a friendly family atmosphere and I look forward to the future with them.

Brian Anderson Factory Manager

Starting with Bata in 1979 as a machine operator the company has given me many opportunities through my career, they have provided me with great training from the start. Being able to work for a company that still manufactures in Australia is great for our community, over the 35 years I have been here I have seen many of people employed by the company at various stages through their careers.



Bata Industrials®

**HAND MADE
IN AUSTRALIA
SINCE 1961**

PVC GUMBOOTS



Bata gumboots are proudly manufactured in our Mornington, Victoria factory and have been worn by Australians for decades. Whether for general use in the yard or garden or simply when it's wet and wild outside, Bata gumboots will keep you dry, safe and comfortable.

Bata Utility gumboots are synonymous with Australian industry and are widely used across a variety of applications. The Utility design is a favourite in the workplace. It is reinforced at the heel, ankle and shin and is both durable and flexible. Channeling in the sole allows for improved liquid dispersal and slip resistance.

Our Jobmaster II gumboots are used widely throughout food processing and associated industries. With a specification well suited to fisheries, meat and poultry processing, Jobmaster II gumboots are made from PVC that has been specifically formulated for the correct work application. Fully lined and with reinforced uppers and a slip resistant sole design Jobmaster II gumboots provide great comfort for the longest of shifts.

With a revolutionary new sole design that is durable and oil & acid resistant Jobmaster III provides surety under foot and excellent multi directional slip resistance. Comfortable for the longest shifts, Jobmaster III is destined to become a firm favourite across Australian industry, just like its hard working and hard wearing predecessors.



UTILITY BOOT 400mm

Black - 892 66080
Green - 892 77080
White - 892 11080



- > Oil & acid resistant
- > Non safety
- > 400 mm knee length boot
- > Water proof
- > Slip resistant
- > Sizes 5 - 12



UTILITY BOOT

Black / Blue - 892 69092
Black / Red - 892 65090
White - 892 11090



- > Oil & acid resistant
- > Steel toe
- > 400 mm high cut boot
- > Water proof
- > Slip resistant
- > Steel midsole - 892 69092
- > Sizes 5 - 12

UTILITY GUMBOOTS



UTILITY BOOT

Black - 892 67053

Black/Red - 892 62074



- > Oil & acid resistant
- > Non safety (Black / Black 892 67053)
- > Steel toe cap (Black / Red 892 62074)
- > 150 mm low cut boot
- > Water proof
- > Slip resistant
- > Sizes 6 - 11



CARA

592 13046



- > Oil & acid resistant
- > Non safety
- > 300 mm high cut boot
- > Water proof
- > Slip resistant
- > Sizes 2 - 8



HANDYMAN

Black 300mm - 892 60069

Black 400mm - 892 60079



- > Oil & acid resistant
- > Non safety
- > Two convenient heights
- > Water proof
- > Slip resistant
- > Sizes 5 - 12



JOBMASTER 2 GUMBOOTS



JOBMASTER 2

Green 300mm - 892 73186
Green 400mm - 892 73180
White 300mm - 892 13186
White 400mm - 892 13180



- › Oil, fat & blood resistant
- › Tunnel System® Impact zone
- › Non safety toe cap
- › Two convenient heights
- › Water proof
- › Slip resistant
- › Sizes 4 - 14



JOBMASTER 2

Green 400mm - 892 73095
White 300mm - 892 10098
White 400mm - 892 10095



- › Oil, fat & blood resistant
- › Tunnel System® Impact zone
- › Safety toe cap
- › Two convenient heights
- › Water proof
- › Slip resistant
- › Sizes 4 - 14



15's

Black / Yellow - 892 62390
Black / Green - 892 67380
White / Yellow - 892 10295
White / White - 892 13280



- › Oil, acid, fat & blood resistant
- › Tunnel System® Impact zone
- › Safety toe cap (892 62390 / 892 10295)
- › Non safety toe (892 67380 / 892 13280)
- › Water proof
- › Slip resistant
- › Size 15 only

JOBMASTER 3 GUMBOOTS



JOBMASTER 3 892 22292



- › Oil & acid resistant
- › Steel toe cap
- › Steel midsole
- › Water proof
- › Slip resistant
- › 400 mm knee length
- › High visibility decal
- › Sizes 4 - 14



JOBMASTER 3 300mm - 892 62288 400mm - 892 62290



- › Oil & acid resistant
- › Safety toe cap
- › Two convenient heights
- › Water proof
- › Slip resistant
- › Sizes 4 - 14



JOBMASTER 3 Green 300mm - 892 67284 Green 400mm - 892 67280



- › Oil & acid resistant
- › Non Safety
- › Two convenient heights
- › Water proof
- › Slip resistant
- › Sizes 4 - 14



ACCESSORIES



WORKLITE

Black - 892 62020

White - 892 12012



- › Light in weight polyurethane
- › Steel toe cap
- › Water proof
- › Slip resistant
- › Anti-static sole
- › Sizes 3 - 14



INSOLES

White Comfort insoles 890 20000

- › Air cushioned EVA insole
- › For industrial use
- › Sizes S, M, L & XL

Black sports insoles 890 30000

- › Air cushioned insole
- › Sizes 4 - 13

Excellent fit insoles 890 40000

- › Air cushioned PU insole
- › For industrial use
- › Sizes S, M, L & XL



SOCKS

Industrial sock 890 80000

- › 75% Cotton 25% Nylon
- › Breathable & comfortable sock
- › Sizes 6-10, 11-13

Sports sock 890 70000

- › 65% Polyester, 20% Nylon, 15% Cotton
- › Breathable & comfortable sock
- › Sizes 6 - 10, 11 -13

OUTSOLE SELECTOR GUIDE

It is crucial to select the right shoe sole for the right working environment. This depends greatly on the working surface, the amount of surface pollution in the work area and the tasks the worker has to perform. That's why Bata Industrials has developed several purpose made types of outer soles, each with its own profile.

HEROES

- Larger profile blocks for enhanced slip resistance
- Flex grooves in forefoot increase flexibility and minimize fatigue
- External torsion tech for stability
- Flex grooves / tunnel in heel design to absorb shock
- Grip at the heel on and grip at the toe off
- Durable rubber outsole - oil, acid and heat resistance 300°C
- Multi directional slip resistant sole



SPORTMATES

- Dual density EVA / Rubber sole
- Flex grooves in forefoot increase flexibility and minimize fatigue
- Heat resistant 300°C
- Tunnel system / Flexlines
- Slip resistant tread for maximum grip
- Anti-static



BICKZ SNEAKERS

- High grip herringbone rubber sole
- Pre-formed flex line
- Cushioned impact absorbing EVA midsole
- Tunnel system impact absorption
- Oil & acid resistant sole heat resistant to 300°C



BICKZ

- Cushioned Phylon midsole
- Durable heat, abrasion, oil and acid resistant rubber outsole
- External TPU torsion stabilizing shank
- Anti-static





Bata Industrials®

NATURALS

- Multi directional slip resistant sole pattern
- Channelling for improved liquid dispersal
- Heavier density PU outsole for durability
- Lighter density PU midsole for cushioning
- Added grip at toe off
- Defined heel strike for ladder use
- Tunnel system for energy return
- Added grip at heel strike
- Oil & acid resistant sole
- Heat resistant to 130°C



DEEP COMFORT

- Cushion PU midsole
- 300°C heat resistant rubber outsole
- Impact Zone sole design
- Lamella impact absorption inserts
- Grip zones
- Ladder breaks
- Liquid dispersal system



PROFESSIONAL

- Tunnel system
- Slip resistant tread for maximum grip
- Anti-static
- Dual density PU / Rubber sole
- High grip sole profile



FIRE

- Durable Vibram® rubber outsole with cushioned PU core.
- Multi directional slip resistant sole – oil, acid and heat resistant to 300°C
- Fire standard compliant





Bata Industrials®

INDUSTRY SELECTION GUIDE



KEY FEATURES GUIDE



For ISO;
Quality endorsed company
AS9001 Lic. QEC0507
Standards Australia



For Australian Standards;
AS / NZS 2210.3, ID No. 2814
Australian / New Zealand Standards

THE ENERGY FOOTWEAR



BATA INDUSTRIALS FITTING GUIDE

The foundation for a good fitting work shoe is the perfect shoe shape or 'last'. Yet, our research shows us that feet are getting wider with each generation. With that in mind Bata Industrials uses a 'last' design with extra space around the front of the foot and instep for greater stability and comfort. We also provide an extensive range of length sizes.



INSTRUCTIONS FOR USE:

To determine your correct size,

Place your heel on the chart where indicated and measure to the end of the longest toe. If the toe is between numbers, choose the larger size.

For sizes 7/7½, 8/8½, & 10/10½.
Select 7½, 8½, & 10½, for a wider fitting
or sizes 7, 8 or 10 for a standard fitting.

This Men's fitting chart is to be used as a guide, the printed scale may distort due to fold in the catalogue. Please check the length of your foot in mm and use the scale to determine your UK / Australian size.





Bata Industrials®

315 mm	M 13
307 mm	M 12
300 mm	M 11
292 mm	M 10-10½
285 mm	M 9½
277 mm	M 9
270 mm	M 8-8½
262 mm	M 7-7½
255 mm	M 6½
248 mm	M 6
240 mm	M 5
232 mm	M 4
225 mm	M 3
217 mm	M 2

Mondo Point	217	225	232	240	247	255	262	270	277	285	292	300	307	315	322
European sizes	35	36	37	38	39	40	41	42	43	44	45	46	47	48	49
UK/Australia male	2-2½	3-3½	4-4½	5-5½	6	6½	7-7½	8-8½	9	9½	10-10½	11-11½	12	13	14
US female	4-4½	5-5½	6-6½	7-7½	8	8½	9-9½	10							
US male	2	3	4	5	6	7	7.5	8	9	10	11	12	13	14	15

SPORTMATES



With sports styling and lightness under foot SportMates® are ideal for workers on the go. A soft cushioned midsole generates outstanding comfort and flexibility whilst also providing high level impact absorption. Suede leather and mesh uppers are padded at the collar and tongue. Coupled with breathable linings this creates optimum climate control inside the shoe for day long comfort.

Light on the foot thanks to soft cushioned midsoles, SportMates® still provide the reassuring protection of steel toe caps and durable rubber outsoles. High energy absorption and flexibility means that SportMates® are perfect for workers on the go. Put a spring into your step....run into your nearest stockist before they run out! Approved to Australian Standards AS/NZS 2210.3 the Sportmates sole features Bata Industrials unique Tunnel System for enhanced energy return.



EARL

703 45685



- › Suede leather / mesh upper
- › Steel toe cap
- › Dual density EVA / Rubber sole
- › PU comfort insole
- › AS / NZS 2210.3 certified
- › Sizes 2 - 13 (Half size 9½)



KNIGHT

703 65682



- › Suede leather / mesh upper
- › Steel toe cap
- › Dual density EVA / Rubber sole
- › PU comfort insole
- › AS / NZS 2210.3 certified
- › Sizes 2 - 13 (Half size 9½)



MONARCH

713 65681



- › Suede leather / mesh upper
- › Steel toe cap
- › Dual density EVA/ Rubber sole
- › PU comfort insole
- › AS / NZS 2210.3 certified
- › Sizes 2 - 13 (Half size 9½)



WARWICK

713 65684



- › Suede leather upper
- › Steel toe cap
- › Dual density EVA / Rubber sole
- › PU comfort insole
- › AS / NZS 2210.3 certified
- › Sizes 2 - 13 (Half size 9½)



WINDSOR

716 85683



- › Nubuck leather upper
- › Steel toe cap
- › Dual density EVA / Rubber sole
- › PU comfort insole
- › AS / NZS 2210.3 certified
- › Sizes 2 - 13 (Half size 9½)

NATURALS



CLASSIC DESIGNS FOR AUSTRALIAN INDUSTRY

The robust characteristics of the Natural collection now feature in an extended product range that is suitable for most working conditions. Integral to the collection, the 'Natural' sole design has been developed to be a natural extension of the body with a broad stable footbed and comfortable toe shape. Retaining Bata Industrials unique Tunnel System® in the heel the 'Natural' sole design also features cushioned dual density polyurethane soles on the outside and PU cushioned insoles on the inside. Surety and comfort under foot are fully optimized in the new Natural collection from Bata Industrials.

Bata Industrials Natural collection has evolved from years of experience servicing Australian industry and have become synonymous with a wide variety of Australian workplaces.



TITAN

706 80510



- › Wheat nubuck leather
- › Steel toe cap
- › Dual density PU sole
- › PU comfort insole
- › AS / NZS 2210.3 certified
- › Sizes 3 - 13 (Half sizes 6½ - 10½)



MERCURY

703 80514



- › Sand suede leather
- › Steel toe cap
- › Dual density PU sole
- › PU comfort insole
- › AS / NZS 2210.3 certified
- › Sizes 3 - 13 (Half sizes 6½ - 10½)



NATURALS



HERCULES 705 60514



- › Black rambler leather
- › Steel toe cap
- › Dual density PU sole
- › PU comfort insole
- › AS / NZS 2210.3 certified
- › Sizes 2 – 13 (Half sizes 6½ – 10½)



ATLAS 704 40514



- › Claret smooth leather
- › Steel toe cap
- › Dual density PU sole
- › PU comfort insole
- › AS / NZS 2210.3 certified
- › Sizes 3 – 13 (Half sizes 6½ – 10½)



BUSHMATE 2 304 40514



- › Claret smooth leather
- › Non safety toe
- › Dual density PU sole
- › PU comfort insole
- › Sizes 3 – 13 (Half sizes 6½ – 10½)

NATURALS

ZIP SIDED SAFETY BOOTS

The Naturals collection has been expanded to include new zip sided boots Samson and Zippy. Robust and durable, Naturals feature Bata Industrial's unique Tunnel System® in the heel for shock absorption and energy return. Outstanding under foot comfort is enhanced through cushioned dual density PU soles and comfort PU insoles. Known and trusted by Australian industry, and now featuring quick and easy fastening, there has never been a better time to zip in to your nearest supplier for a pair of Naturals.

NATURALS WITH TUNNEL SYSTEM SOLE DESIGN

All the Bata naturals range come packed with features including the Tunnel System sole design. It features multi directional slip resistant sole pattern, channeling for improved liquid dispersal, heavier density PU outsole for durability, Lighter density PU midsole for cushioning, added grip at toe off, defined heel strike for ladder use, tunnel system for energy return, added grip at heel strike, oil & acid resistant sole and heat resistant to 130°C.



SATURN

705 60510



- › Black smooth leather
- › Steel toe cap
- › Dual density PU sole
- › PU comfort insole
- › AS / NZS 2210.3 certified
- › Sizes 2 – 13 (Half sizes 6½ – 10½)



NEPTUNE

715 60511



- › Black smooth leather
- › Steel toe cap
- › Dual density PU sole
- › PU comfort insole
- › AS / NZS 2210.3 certified
- › Sizes 2 – 13 (Half sizes 6½ – 10½)



NATURALS ZIP SIDED



ZIPPY 804 66641



- › Black smooth leather
- › Steel toe cap
- › Dual density PU sole
- › PU comfort insole
- › External scuff cap
- › AS / NZS 2210.3 certified
- › Sizes 2 – 13 (Half sizes 6½ – 10½)



ZIPPY 804 88841



- › Wheat nubuck leather
- › Steel toe cap
- › Dual density PU sole
- › External scuff cap
- › PU comfort insole
- › AS / NZS 2210.3 certified
- › Sizes 2 – 13 (Half sizes 6½ – 10½)



SAMSON 706 80519



- › Wheat nubuck leather
- › Steel toe cap
- › Dual density PU sole
- › PU comfort insole
- › AS / NZS 2210.3 certified
- › Sizes 5 – 13 (Half sizes 6½ – 10½)

DEEP COMFORT



Deep Comfort's mushroom lamella sole design is the most effective means of increasing the ratio of surface area to mass, increasing your overall comfort due to increased impact dispersal. In addition to the Comfort Technology System®, the Deep Comfort range uses the latest technology in raw materials, design and production processes. All Deep Comfort styles use premium full grain or nubuck leather uppers. The upper designs are such to maximise both comfort and durability.

The Deep Comfort's new sole design reflects the lamella and the CTS absorption zones. The benefits can be seen with the expansion of the mushroom shaped interior button, through to the spread of the lamella zones on the distinct sole. These impact zones provide you with a more comfortable work boot that will aid and protect your feet, legs and lower back. This unique idea delivers the wearer ultimate in comfort technology and protection. With such a simple design concept Deep Comfort is now pioneering these techniques and offering them in the form of our latest range of safety boots.



FEATURES AND BENEFITS

1. Full grain leather uppers
2. Padded lining & sock
3. PU comfort footbed
4. Cushion PU midsole
5. 300° heat resistant rubber outsole
6. Impact Zone sole design
7. Lamella impact absorption inserts
8. Flex point tongue
9. Heavy duty nylon pull tabs
10. Easy removal lugs
11. High density padded collar & tongue
12. Heavy duty fastening system
13. Grip zones
14. Ladder breaks
15. Liquid dispersal system
16. Latex toe cap liner
17. Rubber toe cap strip
18. 200 joule steel cap
19. External scuff cap



PATRIOT 815 60640



- › Black full grain leather upper
- › Steel toe cap
- › External scuff cap
- › Dual density PU / Rubber sole
- › PU comfort insole
- › AS / NZS 2210.3 certified
- › Sizes 5 - 14 (Half sizes 6½ - 10½)



DEEP COMFORT



WORX 815 40150



- › Claret full grain leather upper
- › Steel toe cap
- › External scuff cap
- › Dual density PU / Rubber sole
- › PU comfort insole
- › AS / NZS 2210.3 certified
- › Sizes 5 – 14 (Half sizes 6½ – 10½)



WORX 815 80150



- › Wheat nubuck leather upper
- › Steel toe cap
- › External scuff cap
- › Dual density PU / Rubber sole
- › PU comfort insole
- › AS / NZS 2210.3 certified
- › Sizes 5 – 14 (Half sizes 6½ – 10½)

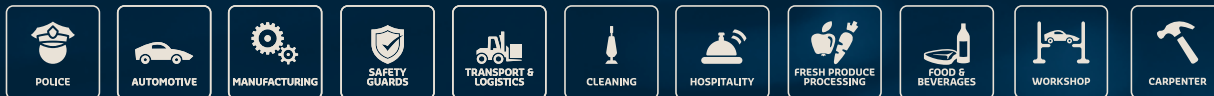


PATRIOT 815 80640



- › Wheat nubuck leather upper
- › Steel toe cap
- › External scuff cap
- › Dual density PU / Rubber sole
- › PU comfort insole
- › AS / NZS 2210.3 certified
- › Sizes 5 – 14 (Half sizes 6½ – 10½)

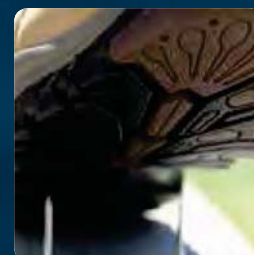
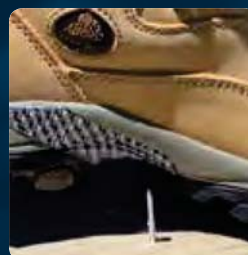
BICKZ®



Anyone who thinks that style, comfort and safety don't go together really should find out more about Bata Industrials Bickz safety shoes. Bickz is a technology based product that uses the latest in composite materials to provide outstanding protection for your feet. Light in weight and fully flexible, Bickz performs comfortably in industrial and professional environments. Functionality, safety and design truly meet as one in the new Bickz collection from Bata.

METAL FREE SAFETY

The Bickz range includes a flexible Wellmax composite midsole. Just like a steel midsole this composite midsole protects the entire base of the foot against sharp objects penetrating through the sole. The range incorporates composite safety toe caps protection in accordance with AS/NZS 2210.3 safety standards.



BICKZ 901
706 36466



- › Tan nubuck leather upper
- › Composite safety toe
- › Composite penetration resistant midsole
- › Dual density phylon / rubber sole
- › PU comfort insole
- › AS / NZS 2210.3 certified
- › Sizes 5 – 13 (Half size 9½)



BICKZ 902
704 66467



- › Black full grain leather upper
- › Composite safety toe
- › Composite penetration resistant midsole
- › Dual density phylon / rubber sole
- › PU comfort insole
- › AS / NZS 2210.3 certified
- › Sizes 5 – 13 (Half size 9½)



BICKZ - METAL FREE SAFETY



BICKZ 903 706 86468



- › Wheat nubuck leather upper
- › Composite safety toe
- › Composite penetration resistant midsole
- › Dual density phylon / rubber sole
- › PU comfort insole
- › AS / NZS 2210.3 certified
- › Sizes 5 - 13 (Half size 9½)



BICKZ 905 716 26470



- › Black leather / mesh upper
- › Composite safety toe
- › Composite penetration resistant midsole
- › Dual density phylon / rubber sole
- › PU comfort insole
- › External scuff cap
- › AS / NZS 2210.3 certified
- › Sizes 5 - 13 (Half size 9½)



BICKZ 909 704 66477



- › Black leather upper
- › Composite safety toe
- › Composite penetration resistant midsole
- › Dual density phylon / rubber sole
- › PU comfort insole
- › External scuff cap
- › AS / NZS 2210.3 certified
- › Sizes 5 - 13 (Half size 9½)

BICKZ® Quick release

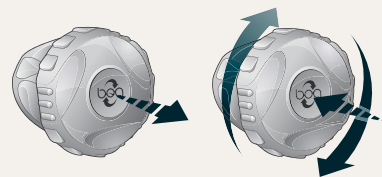
The Boa Closure System is the fastest, most revolutionary closure system on the market. Exceptionally durable and lightweight reels combine with aircraft grade stainless steel laces to provide smooth, even closure for a secure, comfortable and truly customized fit.

When safety and durability are the primary concern, Boa® cuts no corners. Coated stainless steel lace and quick-release reels tag-team to provide optimum closure in extreme environments where it's needed most.

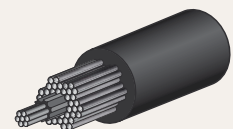
The protection and security of high leg boots in the Bickz range is complimented by lace and zip fastening options. Bickz 906 and 907 feature strong YKK 10 zips allowing for quick and easy access and removal. Bickz 906 and 907 are completely metal free and airport friendly. For all other occasions you'll be able to zip your Bickz on or off in a flash.

BICKZ® featuring Boa fastening system.

- › Glove like, precise fit
- › Aircraft grade stainless steel laces
- › Powerful, uniform closure & no pressure points
- › Micro and On-the-Fly Adjustability
- › Speed = Quick release



Bata Bickz use the M3 dial and EX735 lace system



Boa lace



BICKZ 906 704 36475



- › Wheat nubuck leather upper (YKK 10 Zip)
- › Composite safety toe
- › Composite penetration resistant midsole
- › Dual density phylon / rubber sole
- › PU comfort insole
- › AS / NZS 2210.3 certified
- › Sizes 5 - 13 (Half size 9½)



BICKZ 907 706 66476



- › Black full grain leather upper (YKK 10 Zip)
- › Composite safety toe
- › Composite penetration resistant midsole
- › Dual density phylon / rubber sole
- › PU comfort insole
- › AS / NZS 2210.3 certified
- › Sizes 5 - 13 (Half size 9½)



BICKZ QUICK RELEASE



BICKZ 991 716 27478



- › Black leather upper (Boa lacing system)
- › Composite safety toe
- › Composite penetration resistant midsole
- › Dual density phylon / rubber sole
- › PU comfort insole
- › External scuff cap
- › AS / NZS 2210.3 certified
- › Sizes 3 – 13 (Half size 9½)



BICKZ 951 804 66565



- › Black leather upper (Boa lacing system)
- › Composite safety toe
- › Composite penetration resistant midsole
- › Dual density phylon / rubber sole
- › PU comfort insole
- › External scuff cap
- › AS / NZS 2210.3 certified
- › Sizes 3 – 13 (Half size 9½)



BICKZ 952 816 36566



- › Tan nubuck leather upper (Boa lacing system)
- › Composite safety toe
- › Composite penetration resistant midsole
- › Dual density phylon / rubber sole
- › PU comfort insole
- › External scuff cap
- › AS / NZS 2210.3 certified
- › Sizes 3 – 15 (Half sizes 6½ – 10½)

BICKZ® Sneakers



With an edgy street look Bickz sneakers not only look good for the job, they are good for the job. Outstanding slip resistant outsoles enhance grip. Sitting between the cushioned EVA outsole and comfort PU insole is a flexible composite midsole for complete under foot protection. Bickz sneakers also feature a composite safety toe which is certified to AS/NZS 2210.3 standards.

BICKZ® Sneakers sole features

1. High grip herringbone rubber sole
2. Pre-formed flex line
3. Cushioned impact absorbing EVA midsole
4. Tunnel system impact absorption
5. Oil & acid resistant sole
6. Heat resistant to 300°C



BICKZ 752
716 66103



- › Black nubuck leather upper
- › Composite safety toe
- › Composite safety midsole
- › Dual density EVA / Rubber sole
- › PU comfort insole
- › AS / NZS 2210.3 certified
- › Sizes 5 – 13 (Half size 9½)



BICKZ 753
713 26104



- › Grey suede leather upper
- › Composite safety toe
- › Composite safety midsole
- › Dual density EVA / Rubber sole
- › PU comfort insole
- › AS / NZS 2210.3 certified
- › Sizes 3 – 13 (Half size 9½)



BICKZ 754 703 26105



- › Grey suede leather upper
- › Composite safety toe
- › Composite safety midsole
- › Dual density EVA / Rubber sole
- › PU comfort insole
- › AS / NZS 2210.3 certified
- › Sizes 5 – 13 (Half size 9½)



BICKZ 755 703 66106



- › Black suede leather upper
- › Composite safety toe
- › Composite safety midsole
- › Dual density EVA / Rubber sole
- › PU comfort insole
- › AS / NZS 2210.3 certified
- › Sizes 5 – 13 (Half size 9½)



PENETRATION RESISTANT MIDSOLE

Sitting between the cushioned EVA outsole and comfort PU insole is a flexible penetration resistant protective composite midsole for complete under foot protection. Bickz sneakers also feature composite safety toe caps.

HEROES



The Heroes collection from Bata Industrials has been developed to withstand the tough demands of Australian industry and to meet the highest level of performance, rightly demanded by Australian workers. Heroes provide outstanding comfort for the longest of working days. Dual density soles, tri-density PU insoles, and thick poron inserts provide incredible cushioning under foot, even in the harshest terrain. Add to this padded collars and tongues, breathable linings, spacious steel toe caps and a generous comfort fitting and you have a great all round environment for your feet to work in. Functionality is enhanced in every step through well designed flex grooves in the sole and pre-formed curving at the toe.

Secondly, and as importantly, HEROES are built to deal with tough working environments. The rubber nitrile outsoles are heat, oil and acid resistant and every pair of HEROES features an external TPU bump cap to further protect and also further extend the life span and durability of your boots. The unique torsion stabilizer provides excellent surety under foot and helps reduce the risk of ankle roll.

FEATURES AND BENEFITS

1. Poron® high impact heel insert
2. Torsion tech stabilizer
3. Type 1 steel toe
4. TRI density PU/Foam comfort insole
5. TPU external scuff cap
6. Full grain leather uppers
7. Reinforced eyelets
8. Multi directional slip resistant sole
9. Breathable lining
10. Latex toe cap liner
11. Rubber outsole – oil acid & heat resistant to 300c
12. Padded collar
13. Larger profile blocks for enhanced slip resistance
14. Flex grooves / tunnel in heel design to absorb shock
15. Heat resistant stitching



HERO 501 704 65243



- › Black water resistant leather upper
- › Steel toe cap
- › External scuff cap
- › Nomex heat resistant stitching
- › Dual density PU / Rubber sole
- › PU comfort insole
- › Sizes 6 – 14 (Half sizes 6½ to 10½)



HEROES



HERO 551 704 68207



- › Black water resistant leather upper
- › Boa lacing system
- › Steel toe cap
- › External scuff cap
- › Nomex heat resistant stitching
- › Dual density PU / Rubber sole
- › PU comfort insole
- › Sizes 4 – 14 (Half sizes 6½ to 10½)



HERO 552 706 88208



- › Wheat nubuck water resistant leather upper
- › Boa lacing system
- › Steel toe cap
- › External scuff cap
- › Nomex heat resistant stitching
- › Dual density PU / Rubber sole
- › PU comfort insole
- › Sizes 4 – 14 (Half sizes 6½ to 10½)



HERO 502 706 35242



- › Wheat nubuck water resistant leather upper
- › Steel toe cap
- › External scuff cap
- › Nomex heat resistant stitching
- › Dual density PU / Rubber sole
- › PU comfort insole
- › Sizes 6 – 14 (Half sizes 6½ to 10½)

PROFESSIONAL COLLECTION



Through Extensive Research and Development, we have developed a specialist range of footwear, to provide all day comfort and support to people who spend long extended periods of time on their feet. This range has literally been developed from the ground up, starting with its "HIGH TRACTION" outsole design. The sole has been developed to give the wearer extreme comfort, whilst maintaining the high levels of durability expected from a Bata Industrial product. The outsole is made from especially formulated rubber compound, which provides the usual resistance to oil and acid, 300°c heat resistance, but through its unique tread pattern increases the AS/NZS2210.5 slip resistance level to more than the standard guaranteed. As this range is part of the Bata Industrial collection, we have added the patented impact absorbing Tunnel System for COMFORT, DURABILITY & STABILITY.



FEATURES AND BENEFITS

1. Padded collar for comfort
2. Leather lining and insole
3. Full grain cowhide leather upper
4. Thermo plastic heel counter
5. Thermo plastic toe puff
6. Tunnel System® Impact zone
7. Polyurethane Cushion Midsole
8. Molded PU foot bed with arch support - removable for orthotics
9. Rubber outsole - oil resistant
10. Slip resistant sole as to AS/NZ 2210.3 standards
11. Mens available in composite safety/non safety toe
12. 300°c heat resistant

TRACTION 824 60777



- › Black nappa leather upper
- › Non safety toe
- › Leather lining & insole
- › Dual density PU / Rubber sole
- › PU insole
- › Sizes 5 - 13 (Half sizes 5½ - 10½)





GRIP 834 60792



- › Black nappa leather upper
- › Non safety toe
- › Leather lining & insole
- › Dual density PU / Rubber sole
- › PU insole
- › Sizes 5 – 13 (Half sizes 5½ - 10½)



GRIP CT 834 60789



- › Black nappa leather upper
- › Composite safety toe
- › Leather lining & insole
- › Dual density PU / Rubber sole
- › PU insole
- › Sizes 5 – 13 (Half sizes 5½ - 10½)



TRACTION CT 824 60765



- › Black nappa leather upper
- › Composite safety toe
- › Leather lining & insole
- › Dual density PU / Rubber sole
- › PU insole
- › Sizes 5 – 13 (Half sizes 5½ - 10½)

PROFESSIONAL Womens

“ ARE YOU AWARE, THAT WORKPLACE INJURY BY SLIPPING OR TRIPPING, IS SECOND TO ONLY THAT OF LIFTING ”

The ladies Professional Collection has four styles tailored towards style focused women in the workforce.

Anchor has a contemporary Mary Jane style upper. The Vamp strap is fastened with elastic to allow for easy fitting and removal. Reinforced quarters provide lateral foot stability. Endurance has a contemporary styled upper, with side zip for easy fitting and elasticized entry point' to allow wearers with higher insteps increased comfort. Grapple has a contemporary athletic styled upper. 5 eyelet tie with extended entry point to allow for easy and secure fitting. Grasp is a traditionally styled Slip on upper. Easy fitting and removal with a generous comfortable fit.

The Professional Collection is completely “Metal Free” so is a great choice for people in the security industry or frequent flyers who need to regularly pass through metal detection units, and don't want the inconvenience of having to remove their shoes.



ANCHOR 524 61734



- › Black nappa leather upper
- › Non safety toe
- › Leather lining & insole
- › Dual density PU / Rubber sole
- › PU insole
- › Sizes 5 – 11 (Half sizes 5½ - 9½)
- › US Ladies sizes



ENDURANCE 544 61735



- › Black nappa leather upper
- › Non safety toe
- › Leather lining & insole
- › Dual density PU / Rubber sole
- › PU insole
- › Sizes 5 – 11 (Half sizes 5½ - 9½)
- › US Ladies sizes



PROFESSIONAL COLLECTION - WOMENS - footwear with traction



GRAPPLE 524 61737



- › Black nappa leather upper
- › Non safety toe
- › Leather lining & insole
- › Dual density PU / Rubber sole
- › PU insole
- › Sizes 5 – 11 (half sizes 5½ - 9½)
- › US Ladies sizes



GRASP 534 61736



- › Black nappa leather upper
- › Non safety toe
- › Leather lining & insole
- › Dual density PU / Rubber sole
- › PU insole
- › Sizes 5 – 11 (Half sizes 5½ - 9½)
- › US Ladies sizes





SPECIALIST COLLECTION



GORE-TEX®

FIRE CHAMPION

724 66938



- › Black fire resistant leather upper + zip insert
- › Steel safety toe
- › Composite penetration resistant midsole
- › Gore Tex waterproof lining
- › Vibram sole
- › AS / NZS 2210.3 certified
- › AS / NZS 4821:2006 Fire standards
- › Sizes 6 – 13 (Half sizes 6½ – 10½)



ZERO

804 63061



- › Black PVC / Suede leather upper
- › Composite toe
- › Warm lining suits freezer conditions
- › PVC sole
- › Sizes 6 – 12 (No half sizes)



ZERO LINER

804 63062

- › Replacement Liner
- › Warm lining suits freezer conditions
- › Sizes 6 – 12 (No half sizes)

MANUFACTURING IN AUSTRALIA SINCE 1961

BATA'S REACH IS WORLDWIDE; ITS PRESENCE IS LOCAL.



www.bataindustrials.com.au

IMPROVING LIVES

